

The Balboa fire pit table is perfect for casual dining at 22 inches high this table is great for restaurants and social settings.

- Top Material
Granite, Stainless steel or other personally selected material

- Base Material
304 or selected alloy
Finish options
Brushed, Electro polish, Copper, powder coat and other custom options are available

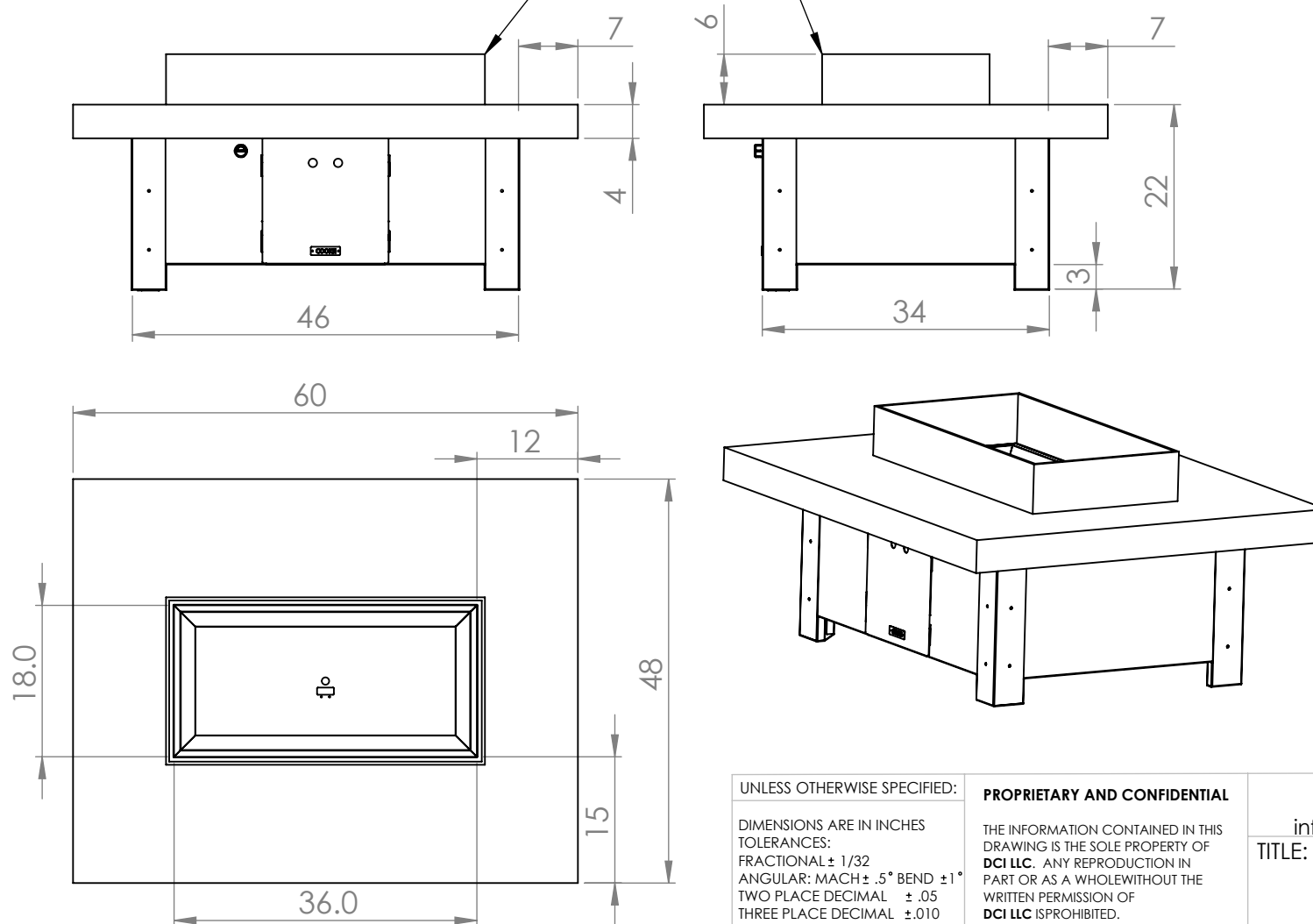
- Fire pit media
Broken Glass, Lava rock, logs, stones and other fire pit decorations are available

- Fuel 100,000 BTU
Propane, Natural gas, wood, alcohol or fuel of choice

- Controls
Solid 304 stainless steel control knob for flame adjustment
ignition options are match light or all weather electronic Ignition system which requires 120v switched power

- Forced air heat: Optional
Requires a 120 v 15 amp switched power

Optional glass wind screen



UNLESS OTHERWISE SPECIFIED:

DIMENSIONS ARE IN INCHES
TOLERANCES:
FRACTIONAL $\pm 1/32$
ANGULAR: MACH $\pm .5^\circ$ BEND $\pm 1^\circ$
TWO PLACE DECIMAL $\pm .05$
THREE PLACE DECIMAL $\pm .010$

INTERPRET GEOMETRIC
TOLERANCING PER: ANSI

MATERIAL
304

FINISH
TBD

DO NOT SCALE DRAWING

PROPRIETARY AND CONFIDENTIAL

THE INFORMATION CONTAINED IN THIS
DRAWING IS THE SOLE PROPERTY OF
DCI LLC. ANY REPRODUCTION IN
PART OR AS A WHOLE WITHOUT THE
WRITTEN PERMISSION OF
DCI LLC IS PROHIBITED.

COMMENTS:

COOKE

CONTEMPORARY FURNITURE

info@cookefurniture.com 888-303-2453

TITLE:

Balboa fire pit table
48x60x22

SIZE
A

DWG. NO.
Balboa-48x60x22

REV

SCALE: 1:20 WEIGHT:

SHEET 1 OF 1